



Web Responsive

JoomlaManager 1.0 Manual

## Manual overview

- 1. Introducing JoomlaManager - Joomla Easy Picture and File Uploader and Manager**
  - 1. Application features**
- 2. Requirements**
- 3. Installation**
  - 1. Installing the JoomlaManager desktop application**
  - 2. Installing the JoomlaManager Joomla extension**
- 4. User manual**
  - 1. Connect to a Joomla site**
  - 2. Manage Joomla sites**
  - 3. Managing pictures and folders**
  - 4. Resizing pictures**
  - 5. Cropping a picture**
  - 6. Renaming a picture**
- 5. F.A.Q.**
- 6. Contact and support**
  - 1. Support forum**
  - 2. Support email**

## 1. Introducing JoomlaManager - Joomla Easy Picture and File Uploader and Manager

This document serves as the manual for the JoomlaManager - Joomla Easy Picture and File Uploader and Manager application version 1.0 created by Web Responsive. It will show you how to configure and use the application to improve your daily picture and file maintenance on multiple Joomla sites.

### 1.1. Application features

JoomlaManager boosts the following features:

- Configuration of one or more Joomla sites
- View any folder structure on a Joomla site
- Select folder and view pictures and files inside
- Drag-n-drop of multiple images and files to upload to Joomla site
- View pictures large (with extra picture information like: picture dimensions and size on disk)
- Download files to your computer
- Delete pictures and files
- Create and delete folders
- Easy swap the current Joomla site
- Resizing of pictures
- Cropping of pictures
- Renaming of pictures and files
- Renaming of folders
- Moving pictures and files from one folder to another by drag-n-drop

## 2. Requirements

The JoomlaManager application has been tested to work on both Joomla! Version 1.5 and 1.6. Furthermore it is recommended that the server running the Joomla! Site has PHP version 5 or later installed.

## 3. Installation

The JoomlaManager application consists of two parts: *a desktop application* (Flex/Air) that runs on your computer and a *Joomla extension* used for the communication between the desktop application and the Joomla site.

### 3.1 Installing the JoomlaManager desktop application

Here are the steps to install JoomlaManager:

1. Unzip the downloaded file "JoomlaManager.zip".
2. Double click "JoomlaManager.exe" (Windows) or "JoomlaManager.dmg" (Mac OS) to install it on your computer.
3. If you don't have the Air runtime environment, this will be detected and installed.
4. Run the application, when the installation is done.

### 3.2 Installing the JoomlaManager Joomla extension

Install the JoomlaManager Joomla Extension for each site Joomla site you want to administrate with JoomlaManager.

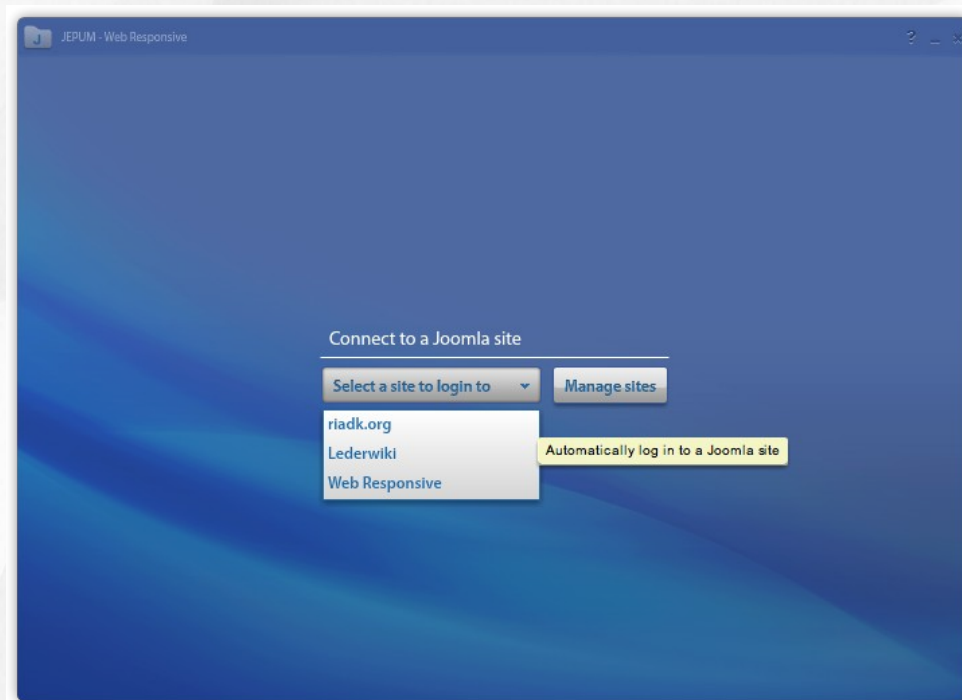
The JoomlaManager Joomla Extension can be installed like any other Joomla extension through the Joomla backoffice of your site, by installing the Joomla extension "JEPUMExtension.zip"

## 4. User manual

This section will cover the usage of each of the views: "Connect to a Joomla site", "Manage Joomla sites", "Managing pictures and folders", "Resizing pictures", "Cropping a picture" and "Renaming a picture" of JoomlaManager.

### 4.1 Connect to a Joomla site

This is the start view of JoomlaManager. The first time you use the application, the "Select a site to login to" combobox will be empty. To configure JoomlaManager to connect to a Joomla site, select the "Manage sites" button. When one or more Joomla sites have been configured, use the "Select a site to login to" combobox to automatically log into a Joomla site and start uploading pictures.



## 4.2 Manage Joomla sites

This is the Joomla site configuration view. This view is used to configure the Joomla sites you want to connect to. Once the Joomla extension has been installed for the site, you only need to fill in the Joomla backoffice administration login: "Site name", "Joomla site URL", "Admin username", "Admin password" and "Image directory".

Here is an example of a configuration of the Joomla backoffice administration login:

For every Joomla site you want the application to connect to, you have to fill in the following fields:

<i>Site name</i>	Name to identify the site configuration
<i>Joomla site URL</i>	The Joomla site URL
<i>Admin username</i>	Joomla administrator username
<i>Admin password</i>	Joomla administrator password
<i>File directory</i>	The Joomla site file folder relative to the root folder (default is "images")

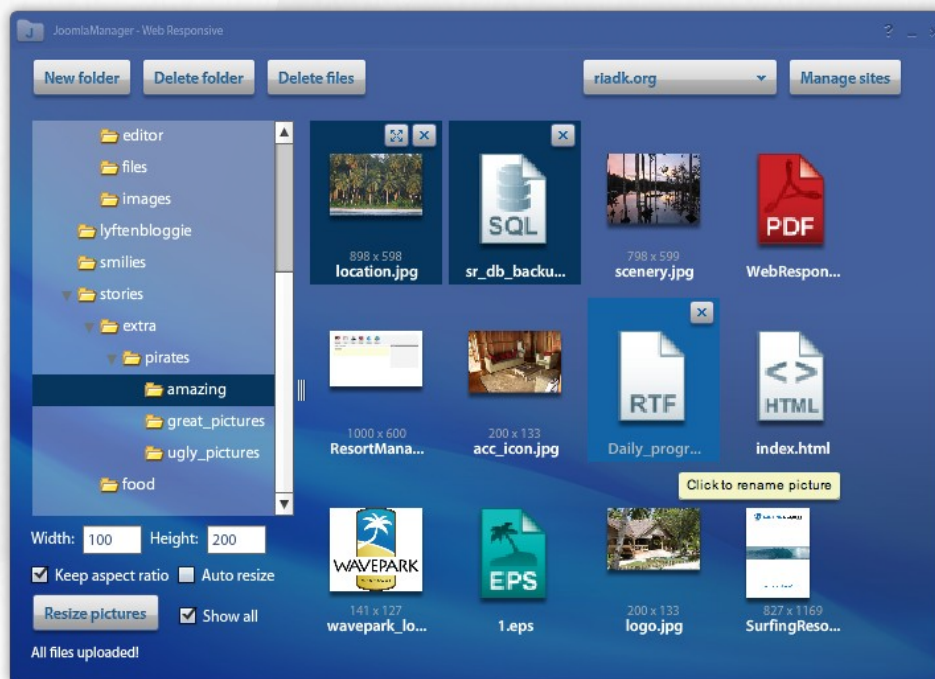
Here you can use the following buttons to manage your Joomla site configurations:

<i>Select a site to edit</i>	Fills in the form with the Joomla site configuration data
<i>New</i>	Create a new site configuration
<i>Delete</i>	Delete the currently selected site configuration
<i>Save</i>	Save a site configuration
<i>Back</i>	Return to the "Connect to a Joomla site" view

Multiple Joomla sites can be configured. These configurations will be stored on your local computer, so it is easy to log in every time you need to manage the pictures on your Joomla site.

### 4.3 Managing pictures, files and folders

This is the main view to manage your Joomla pictures and files. On the left hand side you find the folder navigation tree. On the right side you find the pictures and files in the currently selected folder. Drag pictures from your Desktop or File Browser and drop them in this area to automatically upload them to the current selected folder on your Joomla site.



The Managing pictures and folders view has the following functionality:

<i>New folder</i>	Create a new folder inside the selected folder
<i>Delete folder</i>	Delete the selected folder
<i>Delete pictures</i>	Delete the selected pictures
<i>Site selector</i>	Log in to another Joomla site
<i>Manage sites</i>	Go to "Manage sites"
<i>Resize pictures</i>	Resize one or more pictures (see section <b>3.4 Resizing pictures</b> )
<i>Show all</i>	Switch between seeing all files or only pictures

**Renaming folder:** Folders can be renamed by double clicking on a folder.

**Renaming pictures:** Click on the name of the picture to rename it (see section **3.6 Renaming pictures**).

**Move pictures:** Pictures can be moved to another folder by dragging them into the destination folder.

When rolling over a picture, two buttons appear. One to crop the picture (see section **3.5 Cropping a picture**) and another to delete the picture. If you double click a picture, the picture will appear in a large view (scaled if bigger than 900 pixels wide and 600 pixels high). If you double click a non-picture file, the file will be opened in a browser.

#### 4.4 Resizing pictures

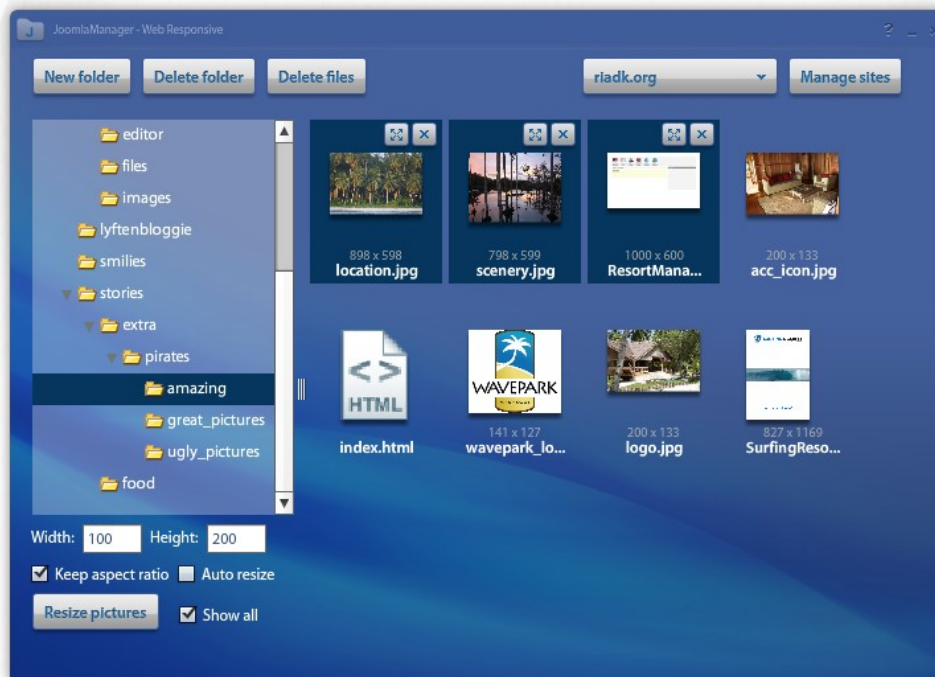
In this section it will be explained how to resize one or more pictures. It is possible to resize automatically, when pictures are uploaded and it is possible to resize the pictures that has already been uploaded.

The resize area has the following buttons and fields:

<i>Width and height</i>	Resize width and height (with <i>Keep aspect ratio</i> selected, these are maximum values)
<i>Keep aspect ratio</i>	If not selected pictures will be stretched, else they will maintain their aspect ratio
<i>Auto resize</i>	When selected pictures will automatically be resized before being uploaded
<i>Resize pictures</i>	When pressed will resize the selected pictures

When Keep aspect ratio is not selected the pictures will be stretched to the width and height indicated. If only one of the width or height has been filled, the picture will only be resized to the filled width or height. For example if a picture has the dimensions 200 x 100 and *Keep aspect ratio* is not selected and only the width has been filled to 400. Then the picture will be resized to 400 x 100.

When Keep aspect ratio is selected the pictures will maintain their aspect ratio when being resized. The width and height filled will be the maximum width and height. This means that the picture will be scaled to the maximum size that fits into the rectangle with the filled width and height. For example if a picture has the dimensions 200 x 100 and *Keep aspect ratio* is selected and the width and height have been filled with the values 400 x 300, then the picture will be resized to 400 x 200. Please note that JoomlaManager will only resize picture files and ignore when other files are selected.



#### 4.5 Cropping a picture

In this section it will be explained how to crop pictures with the built in cropping functionality.

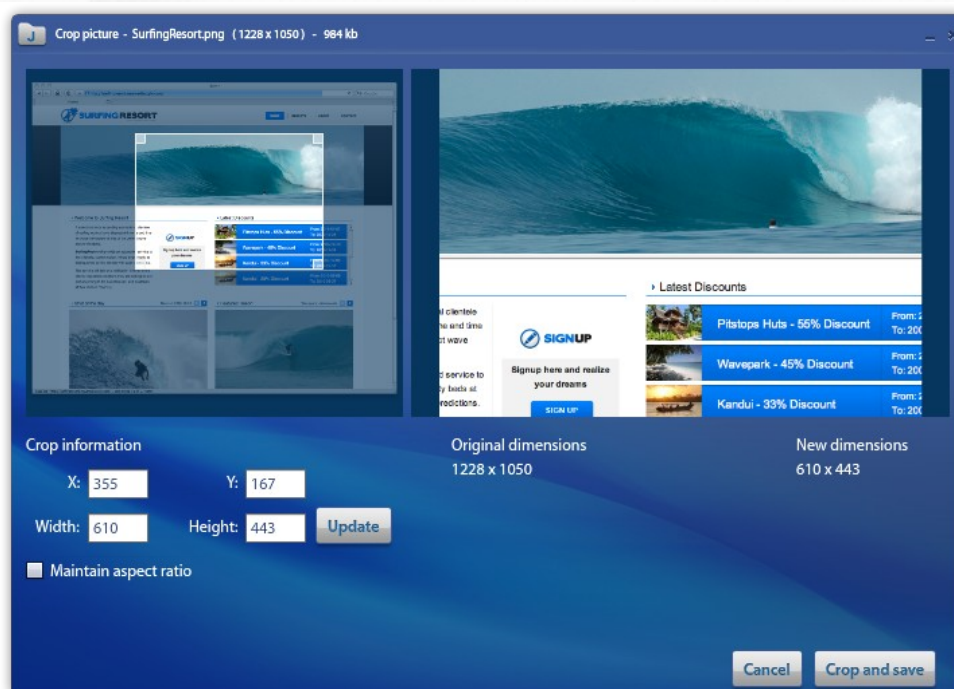
Clicking on the top left icon on the picture rollover will bring the cropping window up.

In the cropping window two pictures are show in the top. The left picture will show the original picture scaled down to fit the cropping area and the right picture will show the resulting cropped picture.

To crop a picture you can resize the selected area in the top left picture using the small white handles to adjust the size of the cropping area. You can also use the fields in the “Crop information” area to set the top left coordinates and the width and height of the cropping area.

When the cropping area has been selected, press the “Crop and save” button to crop the picture and overwrite the original picture.

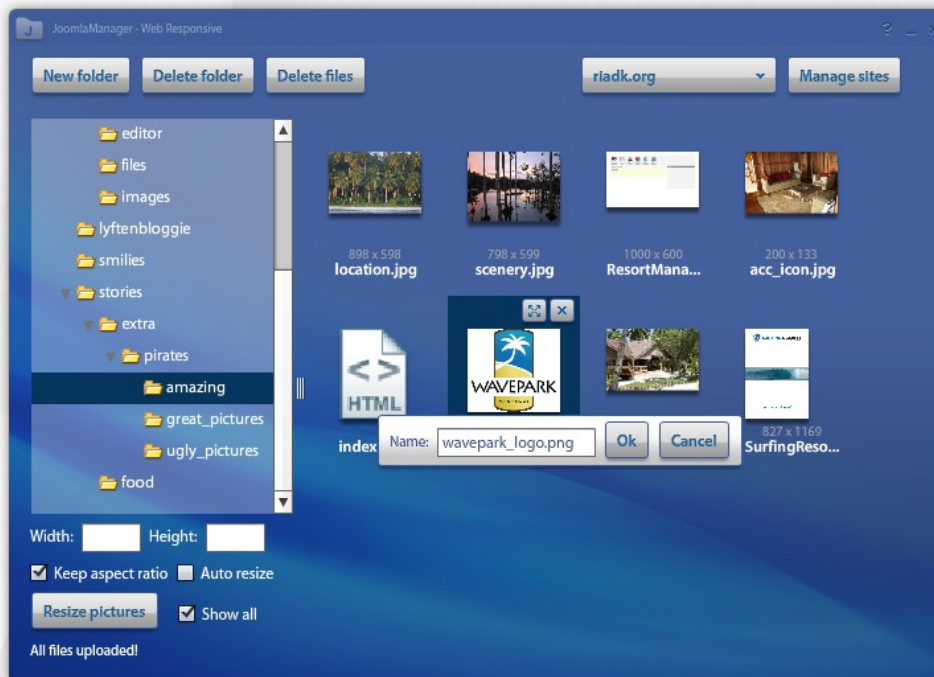
The “Maintain aspect ratio” button will keep the aspect ratio of the crop area, when adjusting the size with the handles.



#### 4.6 Renaming a picture

In this section it will be explained how to rename pictures with JoomlaManager.

To rename a picture, just click on the name of the picture. A popup will appear with the current name. Write the new name and press “Ok” or hit return. Remember that if you remove or change the extension, JoomlaManager might not recognize the file as a picture and it will not appear.



## 5. F.A.Q.

### 5.1 Can I delete the stories, food and fruit folders?

The JoomlaManager doesn't change the permissions of these folders during installation, so it all depends on what permissions they already have. These permissions can be changed by using your favorite FTP client to log into your Joomla site and changing the permissions.

### 5.2 What happens on the server when I create a new picture folder?

For each new folder created with the JoomlaManager a standard Joomla index.html file is created and the permissions for the folder is set to 755.

### 5.3 I have filled out the Joomla administrator connection, but I can't connect to the site?

Please check that you have installed the necessary JoomlaManager Joomla extension on your Joomla site. This can be done as a normal extension installation through your Joomla backoffice.

### 5.4 Can I use the same JoomlaManager application on several Joomla sites?

Yes, the Joomla Easy Picture Uploader and Manager can be configured to connect to multiple Joomla sites. Just remember to install the JoomlaManager Joomla extension on each site that JoomlaManager should connect to.

### 5.5 Can I test the JoomlaManager on a website running locally on my computer?

Yes, the JoomlaManager works both locally and on online Joomla sites.

### 5.6 How do I rename a folder?

Just double click on the folder you want to rename, change the name in the popup and press "Ok".

### 5.7 How do I move pictures to another folder?

Select the picture(s) you want to move, hold down the mouse button on one of the selected pictures and drag them into the folder you want to move them to.

### 5.8 JoomlaManager opens in the "images" directory, but I want to open in another directory. Is that possible?

Yes, the latest version of JoomlaManager, supports configuration of the folder JoomlaManager opens. This is changed by going to the "Manage sites" view, selecting the site you want to edit and changing the field "Image directory". This could for example be "images/stories".



## 6. Contact and support

Web Responsive provides you two ways of getting support for JoomlaManager - Joomla Easy Picture and File Uploader and Manager.

### 6.1 Support forum

Discuss our component or look for already answered questions in our Support Forum on

<http://www.web-responsive.com/index.php/support-forum-en>

### 6.2 Support email

Or write us directly with comments, critics or more information about the JoomlaManager - Joomla Easy Picture and File Uploader and Manager, please contact Web Responsive support at [support@web-responsive.com](mailto:support@web-responsive.com)